



# USER MANUAL

## VOLVO CE EMULATOR INSTALLATION

**EURO 6**



 [www.canbusemulator.com](http://www.canbusemulator.com)

 +90 530 937 46 36

 [erenakarsubasi](https://t.me/erenakarsubasi)



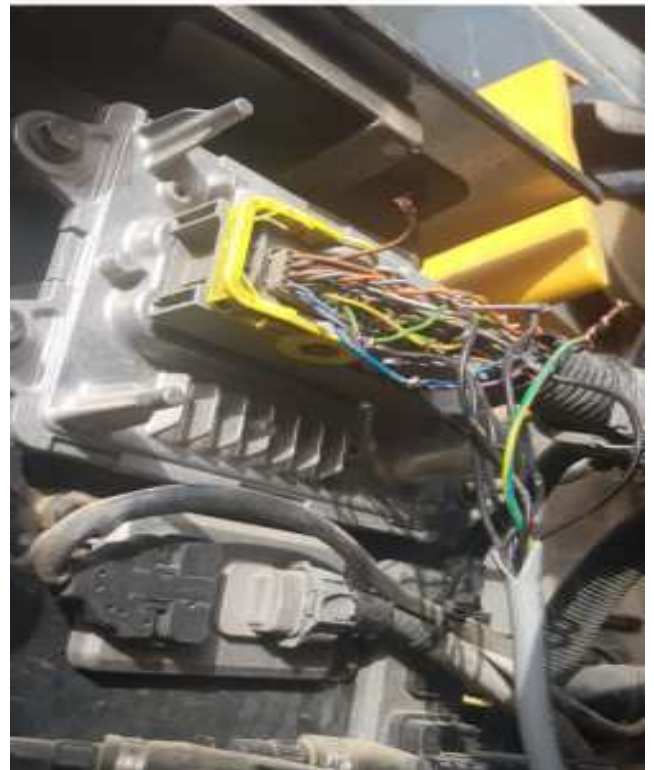
# VOLVO CE EMULATOR INSTALLATION

Exhaust cleaning and soot reset should be done while the vehicle is original. otherwise, there may be soot level accumulation after emulator installation.

EMULATOR	ACM SOCKET
Green Cable	Pin 1
Yellow Cable	Pin 5
Brown Cable	Pin 10
White Cable	Pin 14
Pink Cable	Pin 2
Blue Cable	Pin 6
Black Kablo	Pin 55 or pin 58

**Cut the cable of PIN 3 in the ACM socket. Connect the red cable of the emulator to the vehicle side.**

**WARNING: Do not remove the fuse.**



**After the emulator assembly, you need to unscrew the DPF.**